

Steeple Renewables Project Community Newsletter



RES is exploring the opportunity to bring forward proposals for a new renewable energy project in Sturton-le-Steeple, Nottinghamshire.

The broad area we are considering is located immediately to the south of West Burton Power Station. This strategic location presents an opportunity to utilise the electricity grid capacity made available following the recent decommissioning of the coal fired power station. This renewable energy project, alongside other proposals embraces the historic role that the area has played in powering the UK. We believe there is an opportunity to build on this legacy and ensure that the area continues to play an important role in the UK's future energy generation.

At this stage, we are considering the type and mix of renewable technologies that could be included in the project. Our present thinking is that the project would include solar energy and battery storage with the potential for the addition of other renewable technologies. Significantly, if the project were to progress it would enable continued agricultural use of the land.

Early informal consultation

We want to understand the views of the local community on our early plans for the proposed renewables energy project. We will be undertaking an early consultation for six weeks from Monday 23 October until Monday 4 December 2023. This early consultation is taking place in advance of formal pre-application statutory consultation on the detail of our proposal which will take place in 2024.

You can learn more about the proposals we are considering on our dedicated project website at www.steeplerenewablesproject.co.uk or at one of our in-person early consultation events detailed on the back page of this newsletter. The project website will host a virtual exhibition replicating the information that will be available at our in-person events.

Providing feedback during our early consultation

You can let us know your thoughts on the proposals by:

- Attending one of our events and completing our feedback form
- Visiting the virtual exhibition and completing an online copy of our feedback form. The virtual exhibition will be live from **Friday 3 November**
- Emailing your comments to info@steeplerenewablesproject.co.uk
- Writing to us via our Freepost address at **Freepost Steeple Renewables Project**








If you have any questions you can speak with a member of the project team on our information line: **0115 718 2070**.

The opportunity

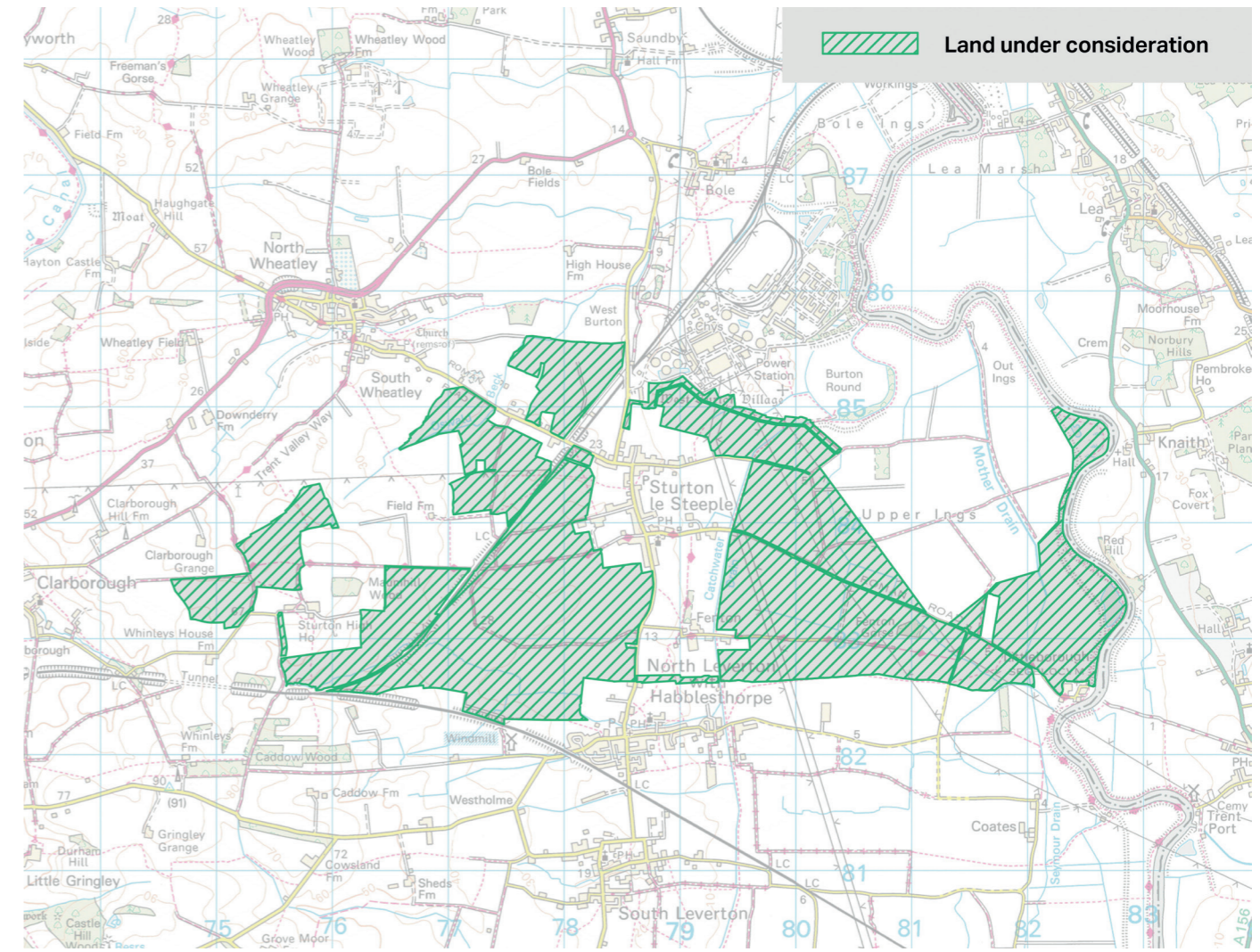
We are in the early stages of considering a number of parcels of land near to the village of Sturton-le-Steeple to bring forward a renewable energy project. The plan opposite indicates the areas of land currently under consideration. The full extent and usage of land will be confirmed in our next consultation in 2024. The plans could include up to 400MW of solar energy generation and 200MW of battery storage. It is anticipated that Steeple Renewables Project could generate enough energy at this early stage to power 156,884 homes¹ annually, which is approximately 45% of all homes in Nottinghamshire.

The electricity generated from the project would connect into the substation at the decommissioned West Burton Power Station. RES has secured a connection agreement with National Grid at West Burton for 600MW of electricity generation.

Steeple Renewables Project could:

-  Generate up to 400MW of renewable energy, enough to power around half of the homes in Nottinghamshire, every year
-  Support the UK's targets to reach net-zero by 2050
-  Utilise electricity grid capacity made available from the decommissioning of the adjacent West Burton Power Station
-  Provide a community benefits package tailored to the needs and priorities of the local community, including a Local Electricity Discount Scheme
-  Deliver £224 million of investment into the construction of the scheme, providing a boost to the local construction sector²
-  Create 400 jobs over the 24-month build programme, supporting skills and employment in the local community³
-  Enable continued agricultural use of the land alongside the renewable energy project

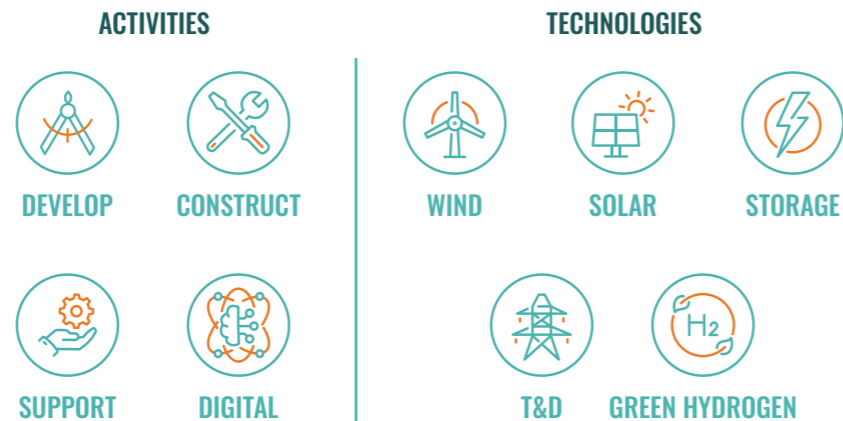
Land under consideration



The above plan is indicative and the precise boundaries of the final application area, which could include or exclude parcels from those shown in green, will be developed as we continue with the detailed design of the proposal

About RES

RES is a British company and the world's largest independent renewable energy company. At the forefront of the industry for over 40 years, RES has delivered more than 23GW of renewable energy projects across the globe and supports an operational asset portfolio exceeding 12GW worldwide for a large client base. RES employs more than 2,500 people and is active in 14 countries working across onshore and offshore wind, solar, energy storage, green hydrogen, transmission and distribution.



1. The homes figure has been calculated by taking the predicted average annual electricity generation of the site and dividing this by the annual average electricity figures from the Department of Business, Energy and Industrial Strategy (BEIS) showing that the annual UK average domestic household consumption is 3,748 kWh (Dec 2021).

2. Based on information provided by the client, a value of £560,000 per MW has been used to calculate construction cost. This cost per MW is multiplied by 400MW, an approximate figure for the generation capacity of the project, to reach a total construction cost of around £224 million.

3. Based on previous experience of other solar farms, the construction phase could support around 1 job per MW during the peak of the construction phase, therefore Steeple could support in the region of 400 jobs.

Community involvement and next steps

Due to the amount of renewable electricity that could be generated, we anticipate the project will require a Development Consent Order (DCO). We want to undertake a robust consultation process which will be supported by detailed environmental and technical site survey work to help inform the scheme design. In advance of this, and as part of its commitment to involving the local community, RES is undertaking this early consultation to introduce the proposals we are considering and begin to gain valuable feedback that will help to refine our proposals. As part of the formal pre-application DCO process we will then undertake statutory consultation on our detailed scheme and invite further views on the proposed detail of our project in 2024.

We are keen to understand the views of local residents regarding the proposed renewable energy project we are considering. The closing date for comments is **Monday 4th December 2023**. Comments will still be accepted after this date but may not be considered in relation to the design development.

Learn more and give your feedback:

Attend our events

We will be holding the following consultation events where you can speak with the project team and find out more:

- **In-person event 1**
South Leverton Memorial Institute Town St,
South Leverton, Retford DN22 0BT,
Friday 3 November, 2pm -7pm
- **In-person event 2**
Sturton Hall and Conference Centre Brickings Way,
Sturton le Steeple, Retford DN22 9HY,
Saturday 4 November, 10am-2pm
- **Webinar**
Wednesday 22 November, 6pm-7pm
(please sign up via our website)

Visit our website

Find out more about our plans on our website where you can also complete an online feedback form:

www.steeplerenewablesproject.co.uk

You can also register for email updates to ensure you are kept updated at key project milestones.

Contact us

If you have any questions, suggestions, our communications team is here to assist you. You can reach us via:



0115 7182 070



info@steeplerenewablesproject.co.uk



Freepost Steeple Renewables Project

Anyone wishing to provide feedback and ideas for local benefits to RES can do this by filling out a feedback form at the exhibition events or online at www.steeplerenewablesproject.co.uk from Monday 23 October.

Anticipated project timeline

We are in the early stages of considering a renewable energy project, but below is an indication of when key milestones throughout the DCO process could take place.



Unable to get online?

If you are unable to access the internet and unable to attend one of our in-person events, you can contact the information line on **0115 718 2070**.

A member of our team will be happy to arrange for copies of the consultation materials and printed feedback form to be sent in the post. If you would like this document in large print, audio, braille, or another language please let us know.

This newsletter has been designed to keep you up to date with the Steeple Renewables Project proposal. If you no longer wish to receive this newsletter, please contact us to let us know.